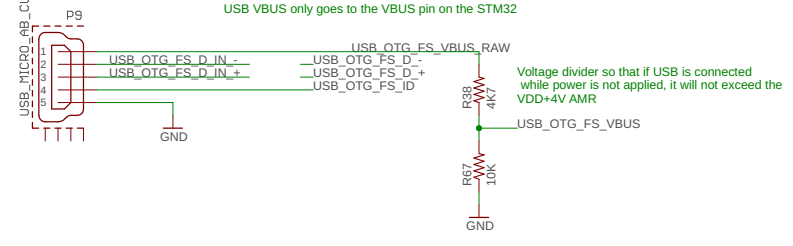
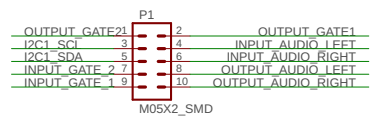
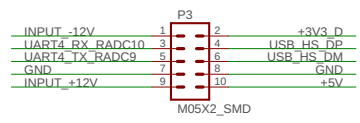
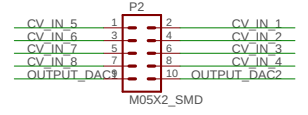
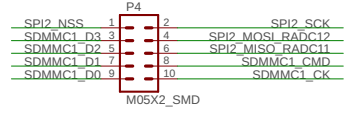
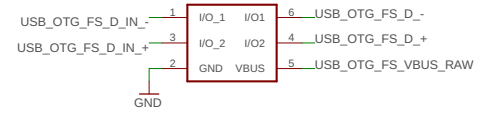


Micro USB

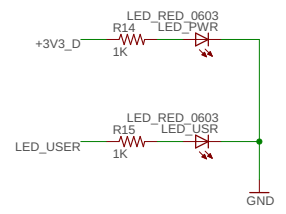
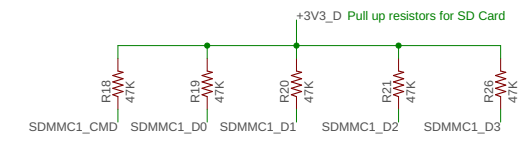
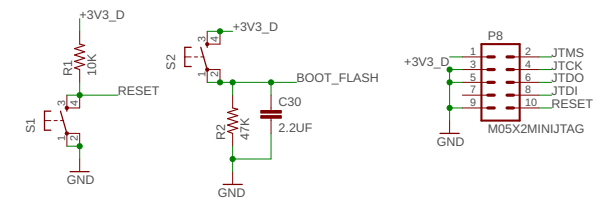
USB VBUS only goes to the VBUS pin on the STM32



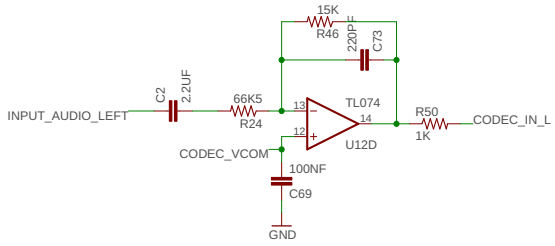
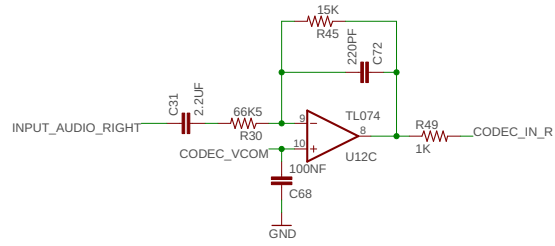
ESD protection



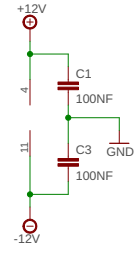
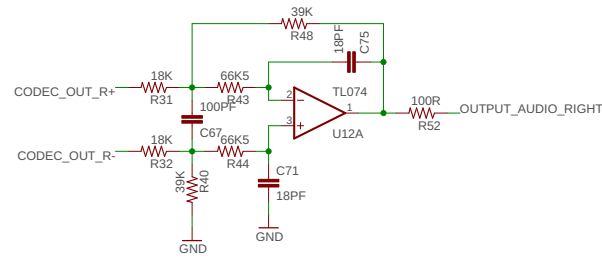
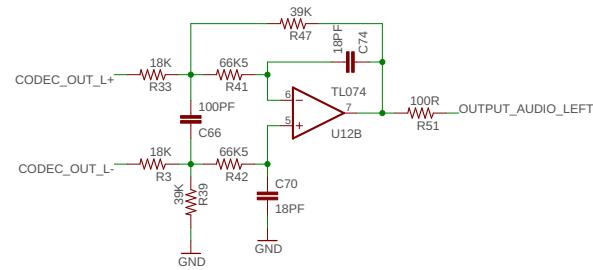
BOOT_FLASH — PG3
BOOT_FLASH connected to allow software boot to DFU

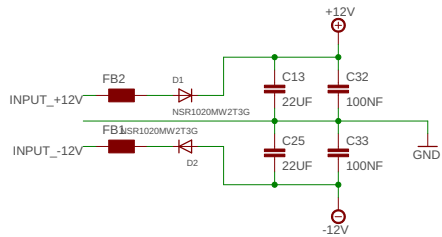


Header Pinouts & User Interface	ES_Daisy_Patch_SM_Rev3-REDUCED	
	2/8/2024 3:20 PM	
	Sheet: 1/4	



AUDIO OUTPUT CIRCUIT





This allows for powering of the MCU from just USB (allowing for pre-flashing, etc. without having to have it powered by eurorack)

